



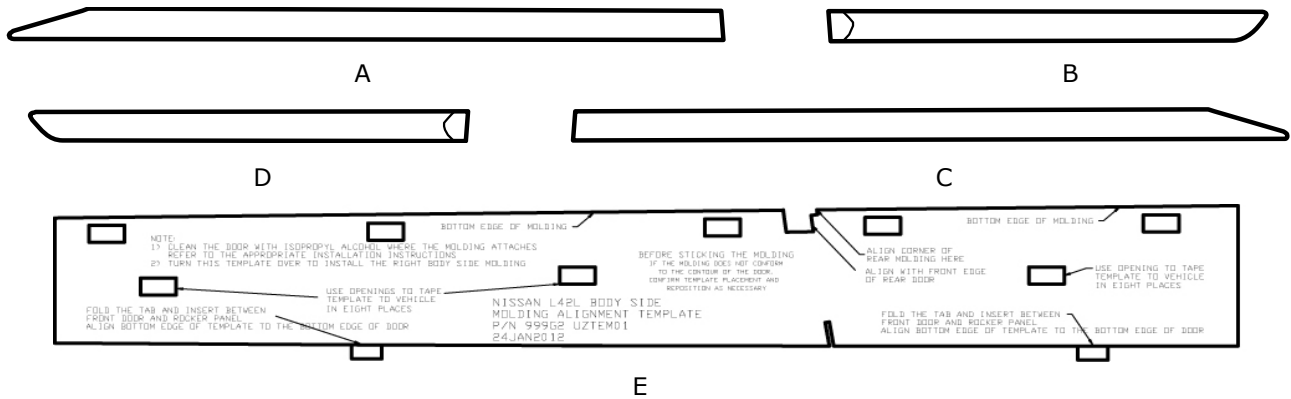
# GENUINE PARTS

## INSTALLATION INSTRUCTIONS

<b>DESCRIPTION:</b>	Body Side Molding- Chrome
<b>APPLICATION:</b>	Altima
<b>PART NUMBER:</b>	999G2 U2x01/2

### KIT CONTENTS:

Item	Qty.	Part Description	Service Part Number
A	1	Molding - LH Front Door	999G2 U2101
B	1	Molding - LH Rear Door	999G2 U2102
C	1	Molding - RH Front Door	999G2 U2201
D	1	Molding - RH Rear Door	999G2 U2202
E	1	Template	999G2 U2TEM01
F	1	Installation Instruction Replacement Template	999V2 AW000



### TOOLS REQUIRED:

- Clean, lint-free wiping cloth
- 90% or greater alcohol solution
- Scissors
- Masking Tape
- Roller (optional)

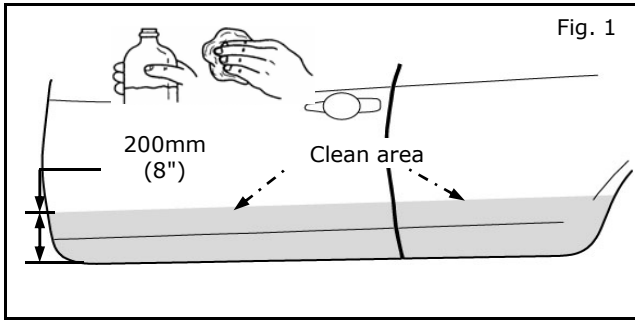
### PRE-INSTALLATION WARNINGS, CAUTIONS, CRITICAL STEPS, and NOTES:

- Dealer installation recommended. Instructions may refer to Service Manual.

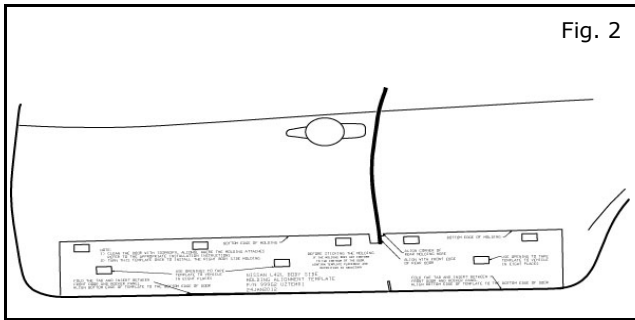
### NOTE:

- Failure to clean mounting surface properly may cause tape to have poor adhesion to vehicle.
- If vehicle has been recently repainted, please allow vehicle paint to dry and age 24 hours before installing body side moldings.
- Install body side moldings when ambient temperature is above 15°C (60°F).
- Do not wash or expose vehicle to a wet environment for 24 hrs after installing moldings.
- Please use proper pressure of 103kPa (15lbs) to adhere body side molding to door.
- These installation instructions are for left side of vehicle; same procedure applies to right side.
- For right side installation, use template with text facing the vehicle.
- Alignment of all body side moldings must be on flat door surfaces. Moldings can not hang over door edges and no gaps allowed. Please follow instructions very carefully for alignment of molding to door edges.

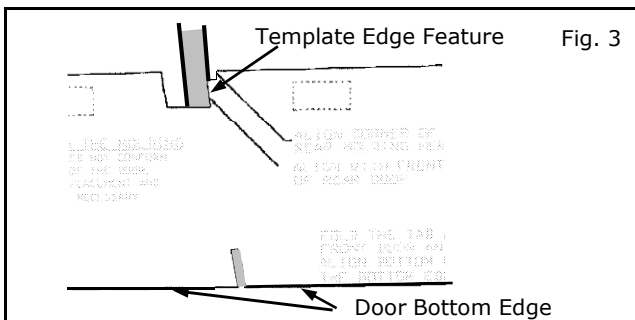
**INSTALLATION PROCEDURE:**



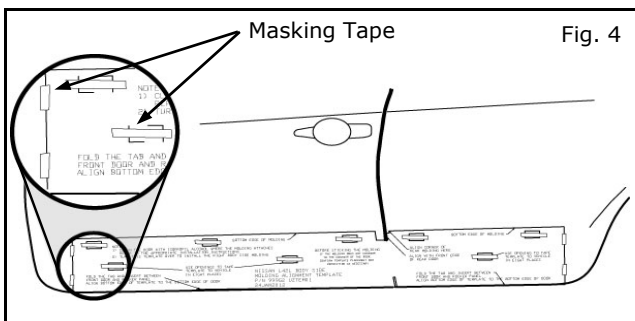
- 1) Clean driver's side vehicle area thoroughly with soap and water to remove any dirt or debris and allow to dry. (See Fig. 1)
- 2) Using a clean, lint-free cloth and 90% alcohol solution, clean area on doors where part will be installed. (See Fig. 1)



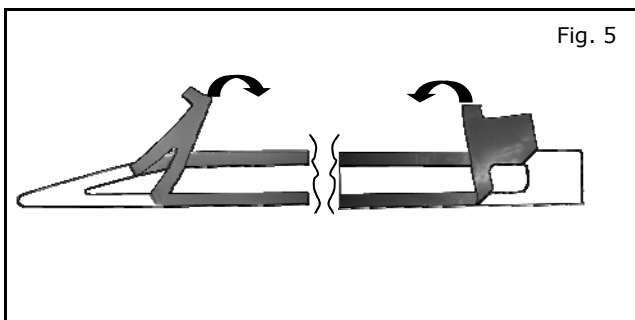
- 3) Fold bottom tabs and place template as indicated. (See Fig. 2)



- 4) Align template edge feature shown in Fig. 3 with front edge of rear door.
- 5) Align template bottom edge with bottom edge of front and rear doors. (See Fig. 3)

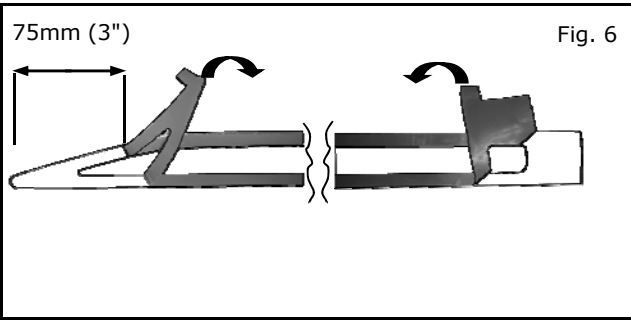


- 6) Secure template with masking tape. (See Fig. 4)

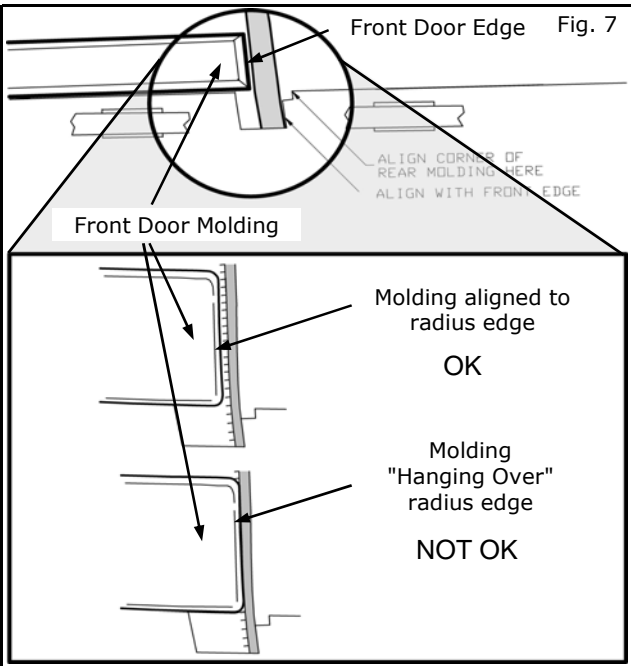


- 7) Remove tape liner from both ends of Front Body Side Molding, as shown in Fig. 5.

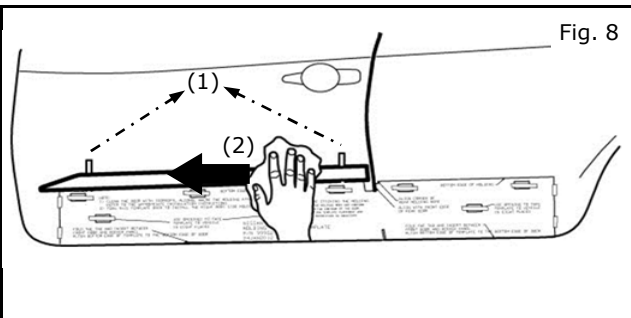
## INSTALLATION PROCEDURE:



- 8) Peel back tape liner 75 mm (3") from both ends, as shown in Fig. 6.

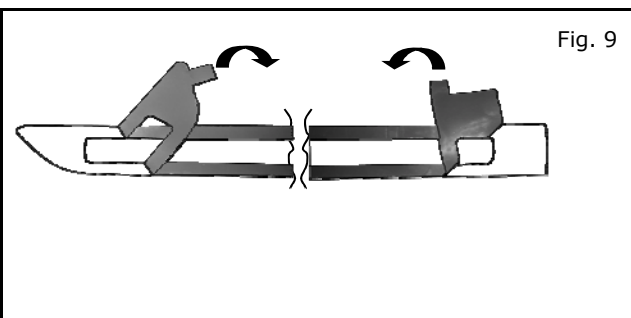


- 9) Align rear edge of Front Body Side Molding to radius on rear edge of front door as shown in Fig. 7.



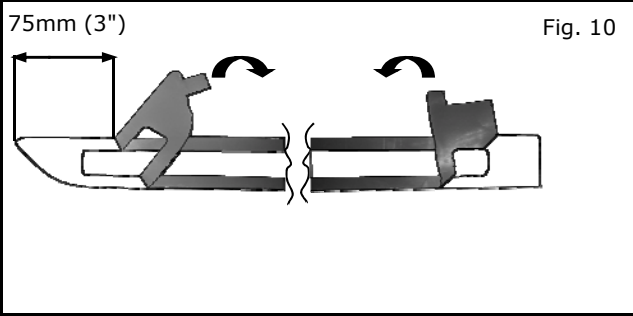
- 10) Align bottom edge of Front Door Molding to top edge of template and press lightly into position. Slowly remove tape liner from Body Side Molding. (See Fig. 8, Step 1)

- 11) Apply 103kPa (15lbs) of pressure using a roller, or by hand with a clean rag from the rear, moving rear to front. (See Fig. 8, Step 2)

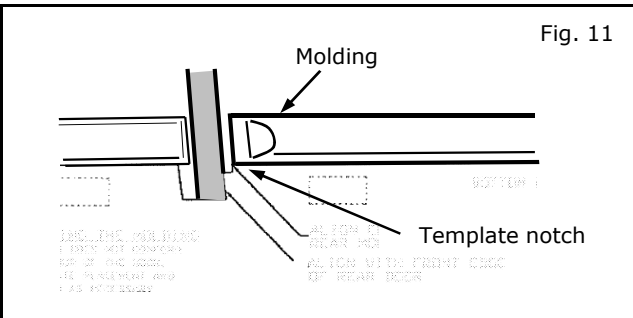


- 12) Remove tape liner from both ends of Rear Body Side Molding, as shown in Fig. 9.

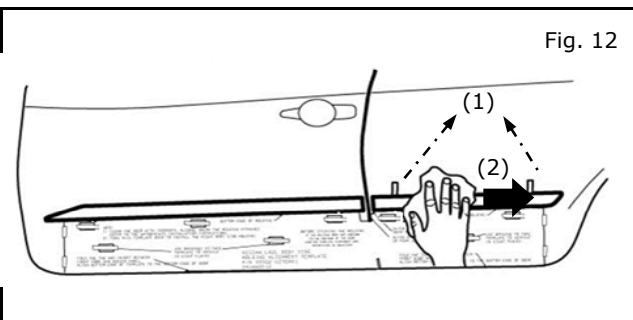
## INSTALLATION PROCEDURE:



- 13) Peel back tape liner 75 mm (3") from all 4 ends, as shown in Fig. 10.

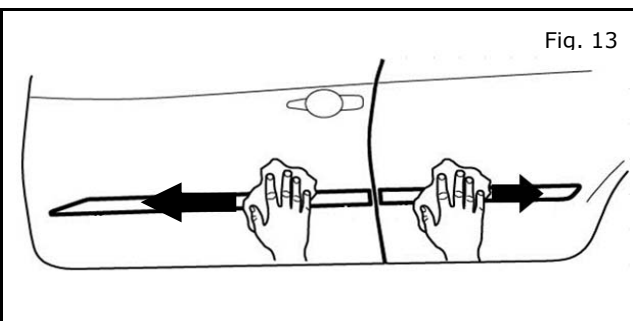


- 14) Align front edge of Rear Body Side Molding to template notch as shown in Fig. 11.



- 15) Align bottom edge of Rear Body Side Molding to top edge of template and press lightly into position. Slowly remove tape liner from rear Body Side Molding. (See Fig. 12, Step 1)

- 16) Apply 103kPa (15lbs) of pressure using a roller, or by hand with a clean rag from the front, moving front to rear. (See Fig. 12, Step 2)



- 17) Remove template. Slowly remove tape from Front Body Side Molding. (See Fig.13, Step 1)

- 18) Apply 103kPa (15lbs) of pressure using a roller, or by hand with a clean rag from the rear, moving rear to front. (See Fig. 13, Step 2)

- 19) Repeat steps 1-18 for passenger side using same template used for driver's side. Template must be flipped with text facing the vehicle.